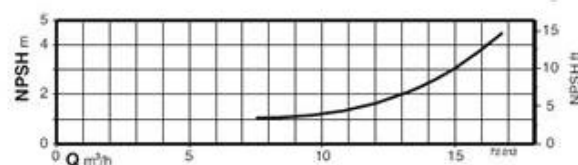
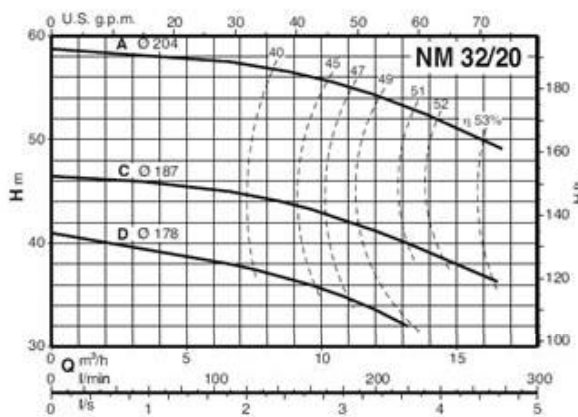
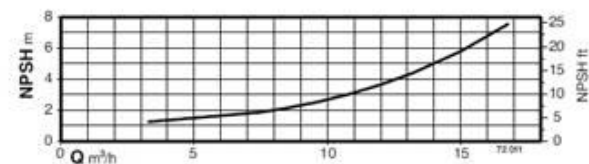
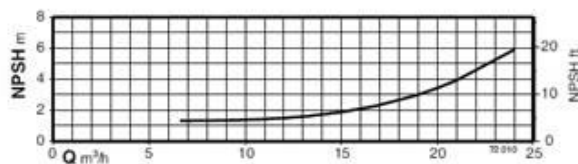
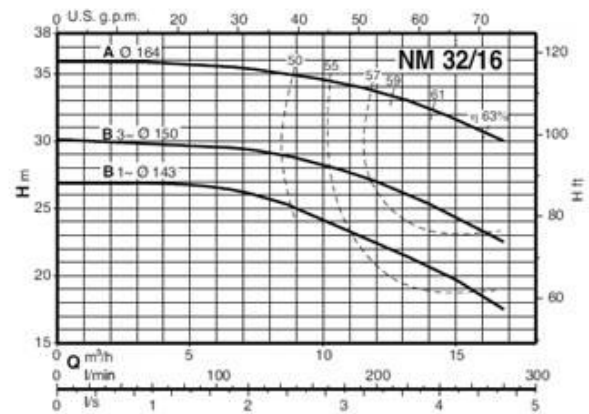
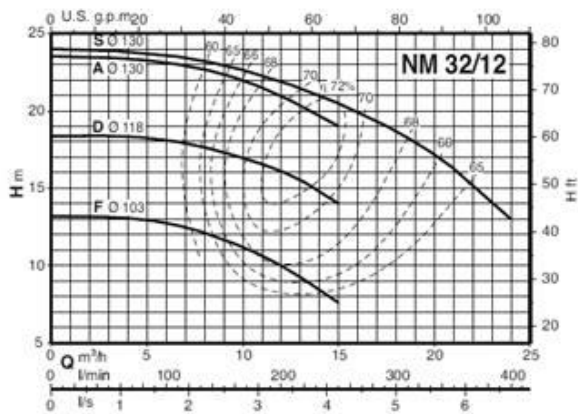


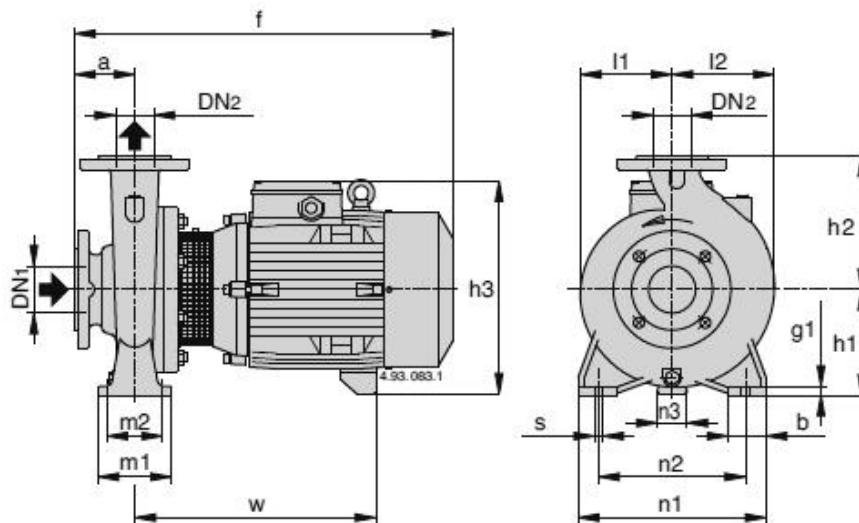
Technisches Datenblatt Spiralgehäuse - Kreiselpumpen

Serie NM Grösse 32

Kennlinien bei	2900 ¹ /min.
Motor 2-polig	50 Hz
Wassertemperatur	20 °C



Massbild NM 32



Pumpenmasse 2 - polig, 2900¹/min

Pumpentyp	Artikel-Nr.	Abmessungen in mm											Gewicht		
		a	f	h1	h2	h3	m1	m2	n1	l1	l2	w	DN1	DN2	kg
NM 32/12FE	111.07600	80	405	112	140	240	100	70	190	93	97	245	50	32	24
NM 32/12DE	111.07601	80	405	112	140	240	100	70	190	93	97	245	50	32	24
NM 32/12AE	111.07602	80	405	112	140	240	100	70	190	93	97	245	50	32	25
NM 32/12SE	111.07603	80	405	112	140	240	100	70	190	93	97	245	50	32	27
NM 32/16BE	111.07604	80	410	132	160	260	100	70	240	120	120	250	50	32	34
NM 32/16A/A	111.07605	80	450	132	160	260	100	70	240	120	120	290	50	32	36
NM 32/20D/A	111.07606	80	450	160	180	288	100	70	240	140	140	290	50	32	39
NM 32/20C/A	111.07607	80	475	160	180	298	100	70	240	140	140	295	50	32	49
NM 32/20A/A	111.07608	80	475	160	180	298	100	70	240	140	140	295	50	32	52

Motordaten NM 32, 2-polig, 2900¹/min

Pumpentyp	Leistung kW	Eingangsstrom in Ampere		
		3~230 V	3~400 V	3~690 V
NM 32/12FE	0.55	3	1.7	-
NM 32/12DE	0.75	3.3	1.9	-
NM 32/12AE	1.1	4.7	2.7	-
NM32/12SE	1.5	7.5	4.3	-
NM 32/16BE	1.5	7.5	4.3	-
NM 32/16A/A	2.2	9.2	5.3	-
NM 32/20D/A	2.2	9.2	5.3	-
NM 32/20C/A	3	11.5	6.6	-
NM 32/20A/A	4	-	9.6	5.5



BRUNNER AG
 Brunnergässli 1
 CH-8302 Kloten
 Tel. 044 814 17 44
 Fax 044 814 17 75
 mail@brunnerpumpen.ch

BRUNNER AG
 Seefeldstrasse 1
 CH-8280 Kreuzlingen
 Tel. 079 654 01 48
 Fax 071 688 82 37
 www.brunnerpumpen.ch

BRUNNER SA
 Via in Paes 82
 CH-6572 Quartino
 Tel. 091 795 21 26
 Fax 091 795 28 92
 www.brunnerpompe.ch