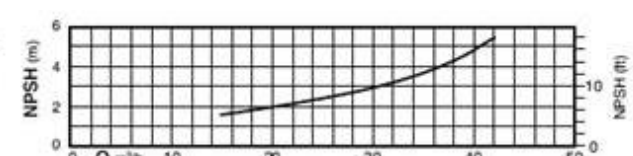
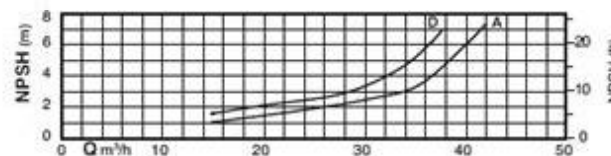
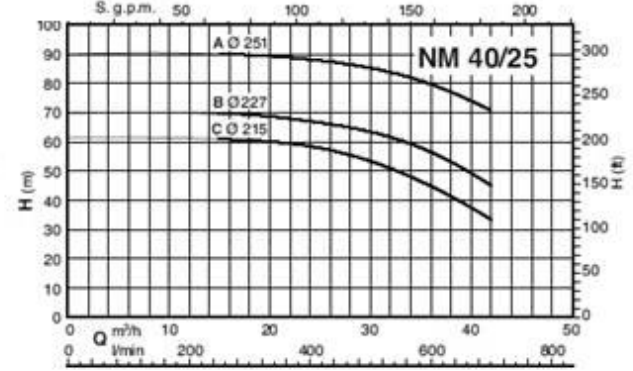
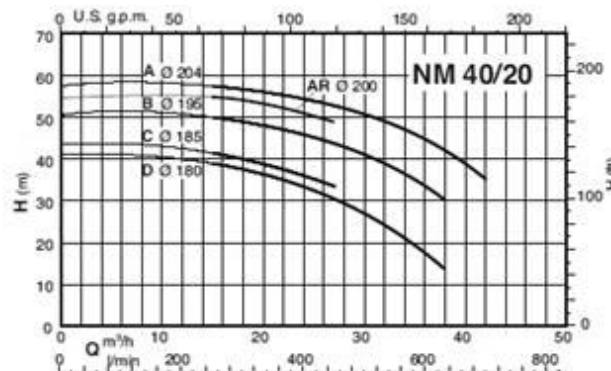
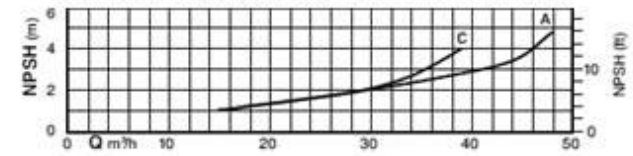
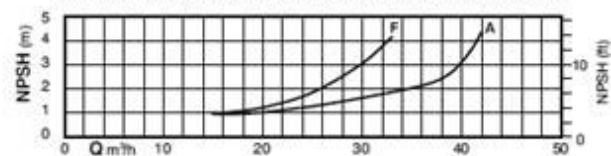
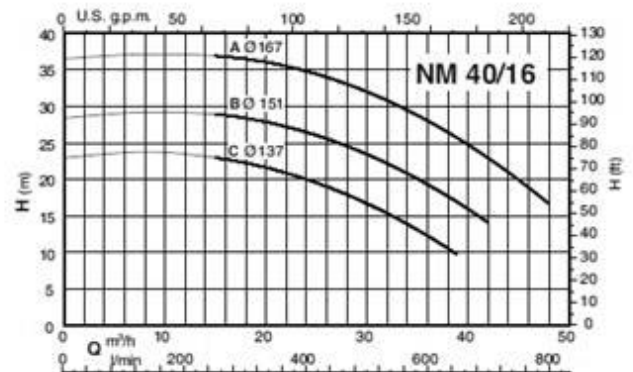
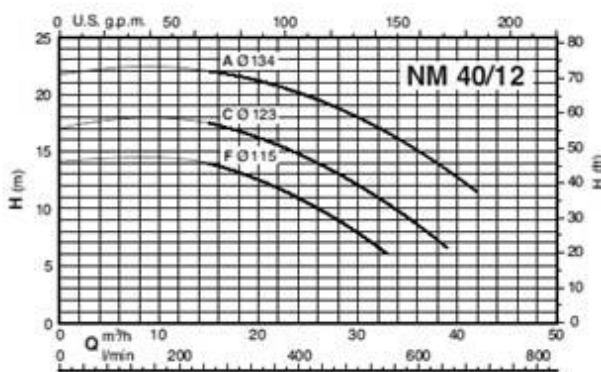


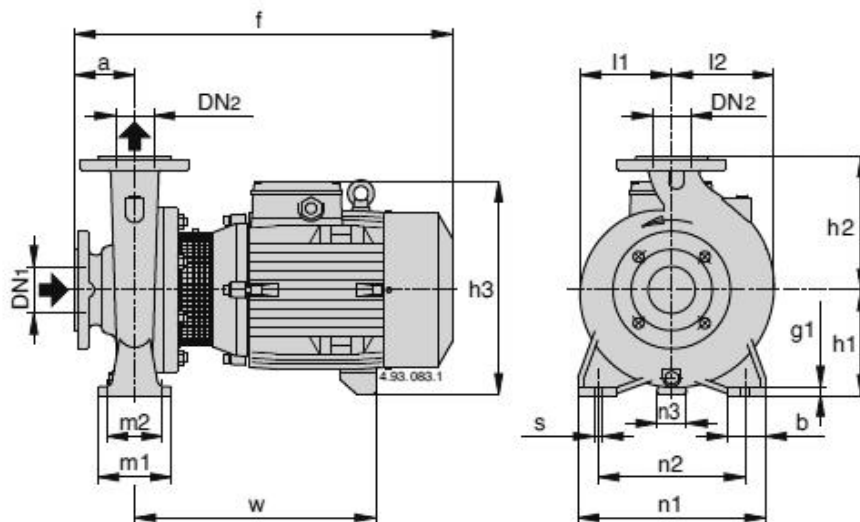
# Technisches Datenblatt Spiralgehäuse - Kreiselpumpen

## Serie NM Grösse 40

Kennlinien bei	2900 <sup>1</sup> /min.
Motor 2-polig	50 Hz
Wassertemperatur	20 °C



# Massbild NM 40



## Pumpenmasse 2 - polig, 2900<sup>1</sup>/min

Pumpentyp	Artikel-Nr.	Abmessungen in mm												Gewicht kg	
		a	f	h1	h2	h3	m1	m2	n1	l1	l2	w	DN1		DN2
NM 40/12F/A	111.07610	80	410	112	140	240	100	70	210	100	113	250	65	40	27
NM 40/12C/A	111.07611	80	410	112	140	240	100	70	210	100	113	250	65	40	29
NM 40/12A/B	111.07612	80	450	112	140	240	100	70	210	100	113	290	65	40	31
NM 40/16C/B	111.07613	80	450	132	160	260	100	70	240	119	119	290	65	40	36
NM 40/16B/B	111.07614	80	475	132	160	270	100	70	240	119	119	295	65	40	45
NM 40/16A/B	111.07615	80	475	132	160	270	100	70	240	119	119	295	65	40	49
NM 40/20D/A	111.07616	100	495	160	180	298	100	70	265	140	140	295	65	40	55
NM 40/20C/A	111.07617	100	495	160	180	298	100	70	265	140	140	295	65	40	55
NM 40/20B/A	111.07618	100	525	160	180	320	100	70	265	140	140	320	65	40	65
NM 40/20AR/A	111.07619	100	525	160	180	320	100	70	265	140	140	320	65	40	65
NM 40/20A/A	111.07620	100	525	160	180	320	100	70	265	140	140	320	65	40	72
NM 40/25C/B	111.07621	100	640	180	225	365	125	95	320	175	175	410	65	40	110
NM 40/25B/B	111.07622	100	640	180	225	365	125	95	320	175	175	410	65	40	116
NM 40/25A/B	111.07623	100	715	180	225	365	125	95	320	175	175	460	65	40	145

## Motordaten NM 40, 2-polig, 2900<sup>1</sup>/min

Pumpentyp	Leistung kW	Eingangsstrom in Ampere		
		3~230 V	3~400 V	3~690 V
NM 40/12F/A	1.1	4.7	2.7	-
NM 40/12C/A	1.5	7.5	4.3	-
NM 40/12A/B	2.2	9.2	5.3	-
NM 40/16C/B	2.2	9.2	5.3	-
NM 40/16B/B	3	11.5	6.6	-
NM 40/16A/B	4	-	9.6	5.5
NM 40/20D/A	4	-	9.6	5.5
NM 40/20C/A	4	-	9.6	5.5
NM 40/20B/A	5.5	-	10.9	6.3
NM 40/20AR/A	5.5	-	10.9	6.3
NM 40/20A/A	7.5	-	14.3	8.3
NM 40/25C/B	9.2	-	18.5	10.7
NM 40/25B/B	11	-	21.5	12.4
NM 40/25A/B	15	-	27.3	15.8



**BRUNNER AG**  
 Brunnergässli 1  
 CH-8302 Kloten  
 Tel. 044 814 17 44  
 Fax 044 814 17 75  
 mail@brunnerpumpen.ch

**BRUNNER AG**  
 Seefeldstrasse 1  
 CH-8280 Kreuzlingen  
 Tel. 079 654 01 48  
 Fax 071 688 82 37  
 www.brunnerpumpen.ch

**BRUNNER SA**  
 Via in Paes 82  
 CH-6572 Quartino  
 Tel. 091 795 21 26  
 Fax 091 795 28 92  
 www.brunnerpompe.ch