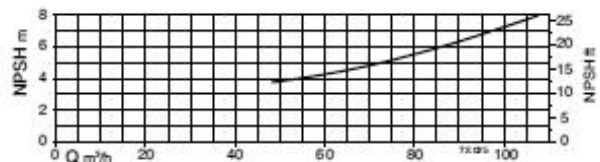
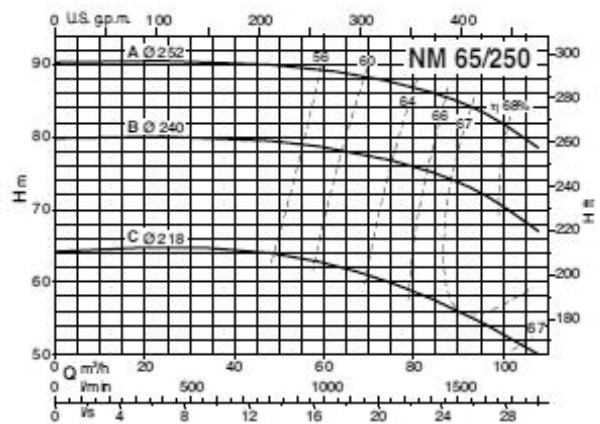
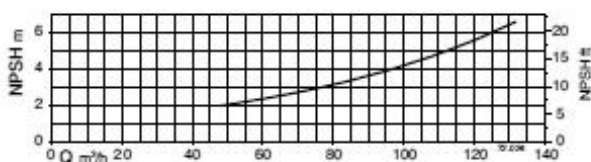
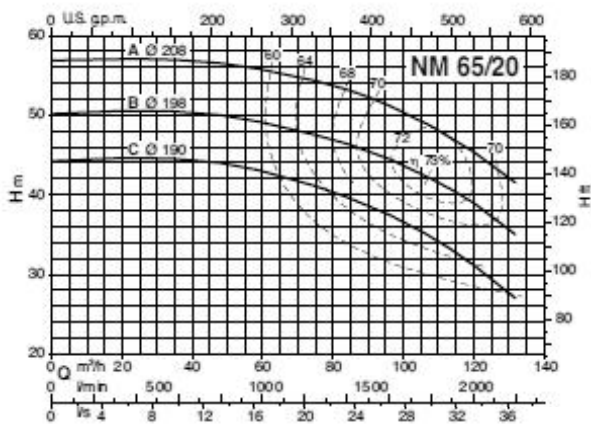
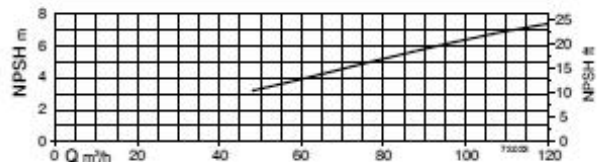
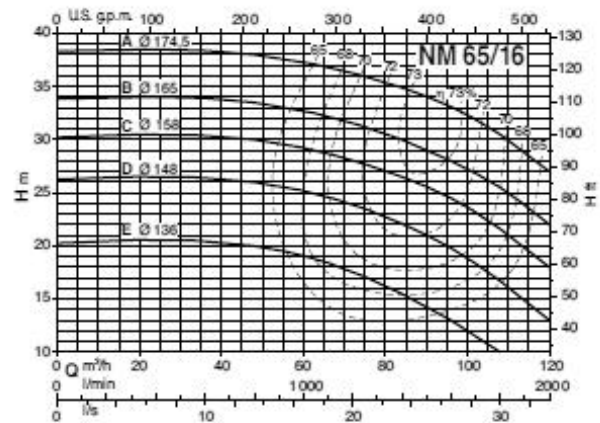
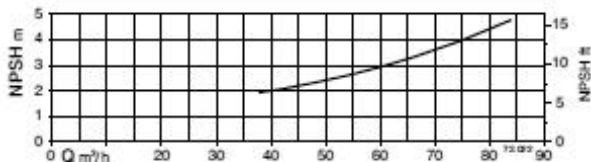
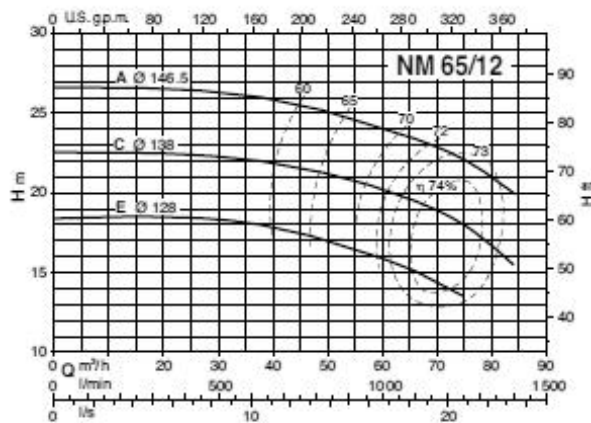


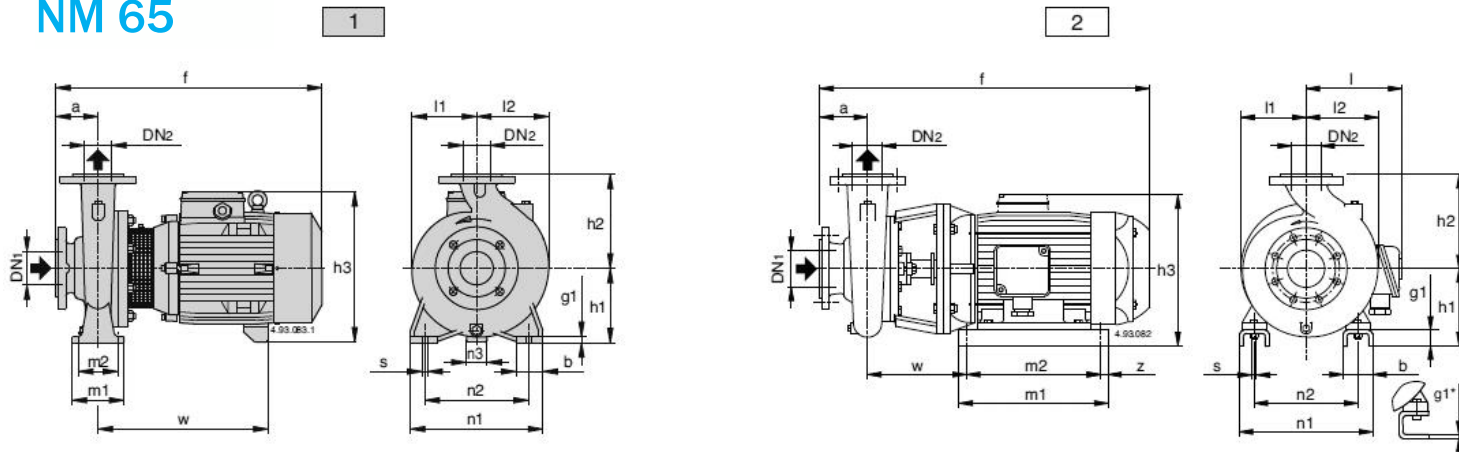
Technisches Datenblatt Spiralgehäuse - Kreiselpumpen

Serie NM Grösse 65

Kennlinien bei	2900 ¹ /min.
Motor 2-polig	50 Hz
Wassertemperatur	20 °C



Massbild NM 65



Pumpenmasse 2 - polig, 2900 ¹/min

Pumpentyp	Artikel-Nr.	Bild	Abmessungen in mm													Gewicht kg
			a	f	h1	h2	h3	m1	m2	n1	l1	l2	w	DN1	DN2	
NM 65/12E/A	111.07650	1	100	495	160	180	298	125	95	280	134	156	295	80	65	55
NM 65/12C/A	111.07651	1	100	525	160	180	320	125	95	280	134	156	320	80	65	67
NM 65/12A/A	111.07652	1	100	525	160	180	320	125	95	280	134	156	320	80	65	73
NM 65/16E/A	111.07653	1	100	525	160	200	320	125	95	280	150	172	320	80	65	70
NM 65/16D/A	111.07654	1	100	525	160	200	320	125	95	280	150	172	320	80	65	75
NM 65/16C/A	111.07655	1	100	640	160	200	345	125	95	280	150	172	410	80	65	106
NM 65/16B/A	111.07656	1	100	640	160	200	345	125	95	280	150	153	410	80	65	100
NM 65/16A/A	111.07657	1	100	715	160	200	345	125	95	280	150	153	460	80	65	121
NM 65/20C/A	111.07658	1	100	715	180	225	365	125	95	320	155	175	460	80	65	127
NM 65/20B/A	111.07659	1	100	715	180	225	365	125	95	320	155	175	460	80	65	139
NM 65/20A/A	111.07660	2	100	825	202	225	408	400	360	344	155	175	245	80	65	164
NM 65/250C/A	111.07661	2	100	825	202	250	408	400	360	344	155	175	245	80	65	174
NM 65/250B/A	111.07662	2	100	825	202	250	408	400	360	344	175	190	245	80	65	195
NMS 65/250A	111.07663	2	100	1032	200	250	-	160	120	360	175	190	406	80	65	299

Motordaten MD 65, 2-polig, 2900 ¹/min

Pumpentyp	Leistung kW	Eingangsstrom in Ampere		
		3~230 V	3~400 V	3~690 V
NM 65/12E/A	4	-	9.6	5.5
NM 65/12C/A	5.5	-	10.9	6.3
NM 65/12A/A	7.5	-	14.3	8.3
NM 65/16E/A	5.5	-	10.9	6.3
NM 65/16D/A	7.5	-	14.3	8.3
NM 65/16C/A	9.2	-	18.5	10.7
NM 65/16B/A	11	-	21.5	12.4
NM 65/16A/A	15	-	27.3	15.8
NM 65/20C/A	15	-	27.3	15.8
NM 65/20B/A	18.5	-	34	19.6
NM 65/20A/A	22	-	41	23.7
NM 65/250C/A	22	-	41	23.7
NM 65/250B/A	30	-	54	31.2
NMS 65/250A	37	-	64	36.9



BRUNNER AG
Brunnergässli 1
CH-8302 Kloten
Tel. 044 814 17 44
Fax 044 814 17 75
mail@brunnerpumpen.ch

BRUNNER AG
Seefeldstrasse 1
CH-8280 Kreuzlingen
Tel. 079 654 01 48
Fax 071 688 82 37
www.brunnerpumpen.ch

BRUNNER SA
Via in Paes 82
CH-6572 Quartino
Tel. 091 795 21 26
Fax 091 795 28 92
www.brunnerpompe.ch