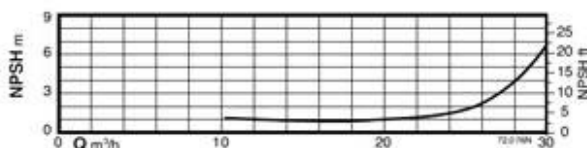
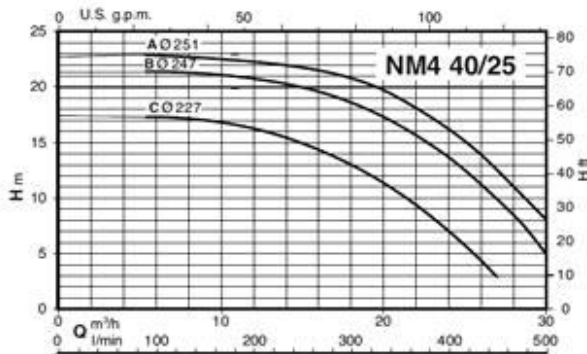
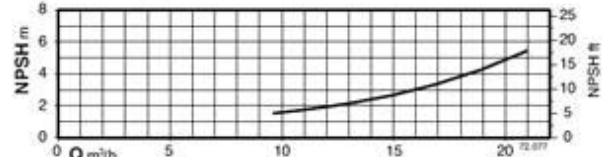
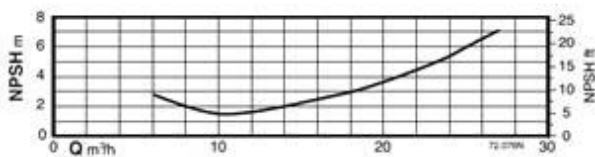
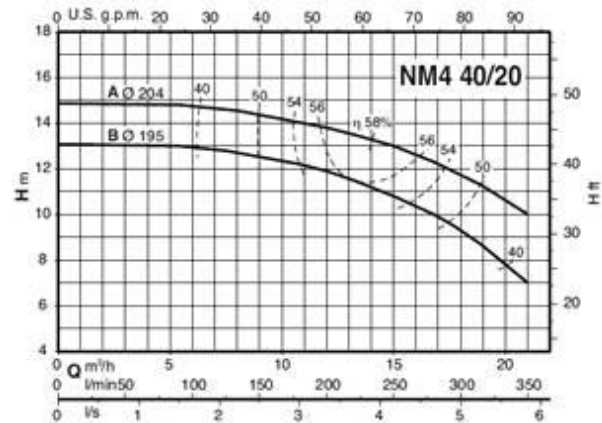
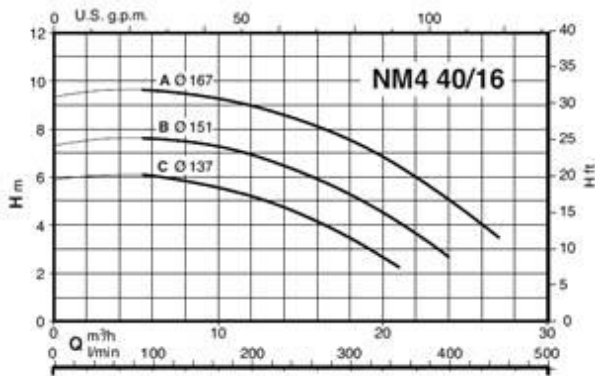


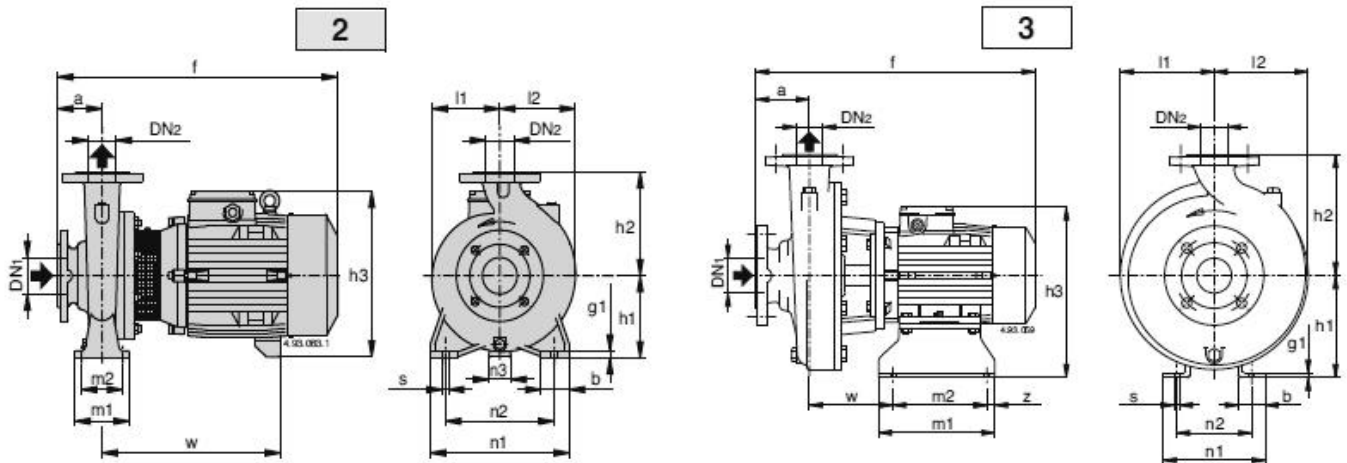
Technisches Datenblatt Spiralgehäuse - Kreiselpumpen

Serie NM4 Grösse 40

Kennlinien bei	1450 ¹ /min.
Motor 4-polig	50 Hz
Wassertemperatur	20 °C



Massbild NM4 40



Pumpenmasse 4 - polig, 1450¹/min

Pumpentyp	Artikel-Nr.	Abmessungen in mm														Gewicht kg
		Bild	a	f	h1	h2	h3	m1	m2	n1	l1	l2	w	DN1	DN2	
NM4 40/16C/A	111.07714	2	80	410	132	160	268	100	70	240	119	119	255	65	40	31
NM4 40/16B/A	111.07715	2	80	410	132	160	268	100	70	240	119	119	255	65	40	33
NM4 40/16A/B	111.07716	2	80	410	132	160	268	100	70	240	119	119	255	65	40	37
NM4 40/20B/A	111.07717	2	100	470	160	180	288	100	70	265	140	140	295	65	40	40.5
NM4 40/20A/A	111.07718	2	100	470	160	180	288	100	70	265	140	140	295	65	40	41
NM4 40/25C/B	111.07719	3	100	495	180	225	308	125	95	320	175	175	300	65	40	62
NM4 40/25B/B	111.07720	3	100	495	180	225	308	125	95	320	175	175	300	65	40	66.5
NM4 40/25A/B	111.07721	3	100	525	180	225	340	125	95	320	175	175	330	65	40	78

Motordaten NM4 40, 4-polig, 1450¹/min

Pumpentyp	Leistung kW	Eingangsstrom in Ampere		
		3~230 V	3~400 V	3~690 V
NM4 40/16C/A	0.37	1.65	0.95	
NM4 40/16B/A	0.55	2.6	1.5	
NM4 40/16A/B	0.75	3.3	1.9	
NM4 40/20B/A	1.1	5	2.9	
NM4 40/20A/A	1.1	5	2.9	
NM4 40/25C/B	1.5	6	3.5	
NM4 40/25B/B	2.2	8.6	5	
NM4 40/25A/B	3	11.1	6.4	



BRUNNER AG
 Brunnergässli 1
 CH-8302 Kloten
 Tel. 044 814 17 44
 Fax 044 814 17 75
 mail@brunnerpumpen.ch

BRUNNER AG
 Seefeldstrasse 1
 CH-8280 Kreuzlingen
 Tel. 079 654 01 48
 Fax 071 688 82 37
 www.brunnerpumpen.ch

BRUNNER SA
 Via in Paes 82
 CH-6572 Quartino
 Tel. 091 795 21 26
 Fax 091 795 28 92
 www.brunnerpompe.ch